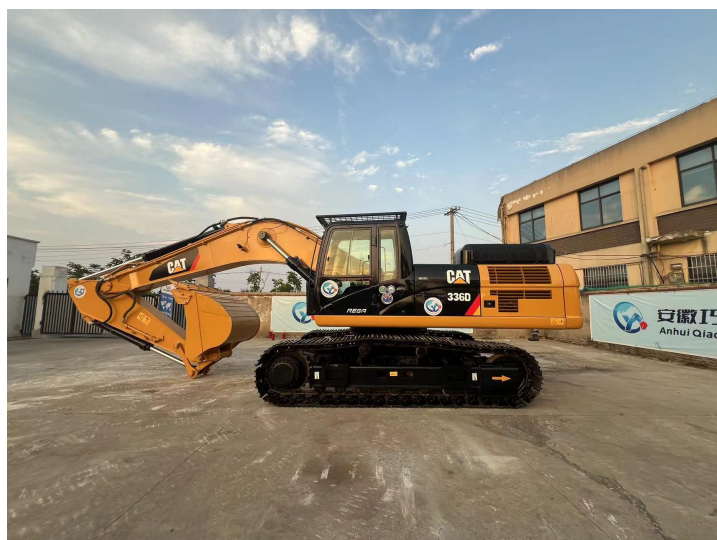




安徽巧元工程机械有限公司  
Anhui Qiaoyuan Construction Machinery Co., LTD

# INSPECTION REPORT

Responsible for every customer.



N o:

# Inspection report of the hydraulic type excavator

## Supervision and inspection report of hydraulic excavator

|                    |  |                   |                |
|--------------------|--|-------------------|----------------|
| Testing company    | Anhui Qiaoyuan Construction Machinery Co., Ltd |                   |                |
| Machinery brand    | Caterpillar                                    | Mechanical model  | 336D           |
| Mechanical size    | 11150*3190*3340mm                              | Mechanical weight | 36tons         |
| Engine power       | 200kw  | Dipper capacity   | 1.4cubic meter |
| User Device Number | CAT0336DKKKT08965                              | Examination clerk | David          |

### Inspection standard

1. General Safety Technical Requirements for Construction Machinery (JB6030-20XX);
2. Test Method for Hydraulic Excavator (GB / T7586-1996);
3. Technical Conditions of Hydraulic Excavator (GB/T9139.2-1996);
4. The Structure and Performance of Hydraulic Excavator (GB / T9140-1996);
5. Mining Force Test Method of Hydraulic Excavator (GB / T13332-1991);
6. Classification of Hydraulic Excavators (GB/T9139.1-1988);
7. Test Method for Structural Strength of Hydraulic Excavator (GB / T9141-1988);

N o:

| Order number | Item class                          | Project number            | Inspecting item                               | Result    |
|--------------|-------------------------------------|---------------------------|---|-----------|
| 1            | <b>1. Technology datum</b>          | 1.1                       | Make relevant information                     | Qualified |
| 2            |                                     | 1.2                       | Transformation (overhaul) related information | Qualified |
| 3            |                                     | 1.3                       | Use relevant information                      | Qualified |
| 4            | <b>2.</b>                           | 2.1                       | Inspection mark                               | Qualified |
| 5            |                                     | 2.2                       | Logo of dangerous parts                       | Qualified |
| 6            | <b>3. Metal construction</b>        | 3.1                       | Metal mechanism condition                     | Qualified |
| 7            |                                     | 3.2                       | Metal structure connection                    | Qualified |
| 8            |                                     | 3.3.1                     | Hydraulic lifting arm                         | Qualified |
| 9            |                                     | 3.3.2                     | Track connection                              | Qualified |
| 10           |                                     | 3.3.3                     | Shovel bucket connection                      | Qualified |
| 11           |                                     | 3.3.4                     | Move arm connection                           | Qualified |
| 12           |                                     | 3.3.5                     | Doupole connection                            | Qualified |
| 13           | <b>5. Main parts and mechanisms</b> | 5.1.1                     | Engine device                                 | Qualified |
| 14           |                                     | 5.1.2                     | Engine assembly to wear out                   | Qualified |
| 15           |                                     | 5.2.1                     | In the cylinder condition                     | Qualified |
| 16           |                                     | 5.2.2                     | Cubor crankshaft wear and lubrication         | Qualified |
| 17           |                                     | 5.2.3                     | Connecting rod wear and lubrication           | Qualified |
| 18           |                                     | 5.2.4                     | Offcentric shaft wear and lubrication         | Qualified |
| 19           |                                     | 5.2.5                     | Cylinder sleeve device                        | Qualified |
| 20           |                                     | 5.2.6                     | Cylinder assembly                             | Qualified |
| 21           |                                     | 5.3.1                     | Number of piston rings                        | Qualified |
| 22           |                                     | 5.3.2                     | Oil pump worker unit                          | Qualified |
| 23           |                                     | 5.3.3                     | Operating state of the radiator               | Qualified |
| 24           |                                     | 5.4.1                     | Hand oil pump supply system                   | Qualified |
| 25           |                                     | 5.4.2                     | Oil outlet valve device                       | Qualified |
| 26           |                                     | 5.4.3                     | Cylinder bed safety device                    | Qualified |
| 27           |                                     | 5.4.4                     | Stank nozzle wear and tear                    | Qualified |
| 28           | 5.5.1                               | A large ring of teeth     | Qualified                                     |           |
| 29           | 5.5.2                               | The plate bearing is worn | Qualified                                     |           |
| 30           | 5.5.3                               | The screw is worn         | Qualified                                     |           |

N O:

| Order number | Item class                                       | Project number | Inspecting item   | Result    |
|--------------|--|----------------|---|-----------|
| 31           | <b>6. Hydraulic pressure system</b>              | 6.1            | Pressure setting of the safety overflow valve of the hydraulic system | Qualified |
| 32           |  | 6.2            | Balancing valve and the hydraulic lock                                | Qualified |
| 33           |  | 6.3            | Hydraulic oil tank filter unit  | Qualified |
| 34           |  | 6.4            | Oil leakage condition of hydraulic pipeline, joint and valve set      | Qualified |
| 35           |  | 6.5            | hose connction  | Qualified |
| 36           |  | 6.6            | Safety warning signs of the accumulator                               | Qualified |
| 37           |  | 6.7            | Hydraulic motor power   | Qualified |
| 38           |  | 6.8            | Hydraulic cylinder connection path                                    | Qualified |
| 39           | <b>7. Safety devices and protective measures</b> | 7.1            | Excavate the indicator  | Qualified |
| 40           |  | 7.2            | gradienter  | Qualified |
| 41           |  | 7.3            | Torque limiter  | Qualified |
| 42           |  | 7.4            | height limitator  | Qualified |
| 43           |  | 7.5            | safety guard  | Qualified |
| 44           |  | 7.6            | Anti-recoil device  | Qualified |
| 45           |  | 7.7            | speed indicator   | Qualified |
| 46           |  | 7.8            | Excavator horn  | Qualified |
| 47           |  | 7.9            | Operator room rotation indicator                                      | Qualified |
| 48           |  | 7.10           | Rotate the operation pedal  | Qualified |
| 49           | <b>8. Operate system</b>                         | 8.1            | Automatic reset function of the operating handle and pedal            | Qualified |
| 50           |  | 8.2            | The sign of the operating handle and pedal                            | Qualified |
| 51           | <b>9. Electricity gas</b>                        | 9.1            | Excavator lighting  | Qualified |
| 52           |  | 9.2            | Electric power drive protection requirements                          | Qualified |
| 53           |  | 9.3            | Power supply ground form  | Qualified |
| 54           | <b>10. Try examine</b>                           | 10.1           | No-load test  | Qualified |
| 55           |  | 10.2           | Load test   | Qualified |
| 56           |  | 10.3           | Static test   | Qualified |
| 57           |  | 10.4           | Dynamic test  | Qualified |
| 58           |  | 10.5           | Sealing performance test  | Qualified |
| 59           |  | 10.6           | Speed test  | Qualified |
| 60           |  | 10.7           | With the load form test   | Qualified |
| 61           |  | 10.8           | Turn table rotation test  | Qualified |
| 62           |  | 10.9           | Moving arm landing test   | Qualified |



Result

**Qualified**

Check

The inspection results show that the excavator meets the relevant technical requirements and safety regulations in terms of appearance, size and weight, performance indicators and safety. It is recommended that users strengthen the maintenance and care of the excavator during normal use to ensure its continued safe and efficient operation.

**安徽巧元工程机械有限公司**

Anhui Qiaoyuan Construction Machinery Co., LTD