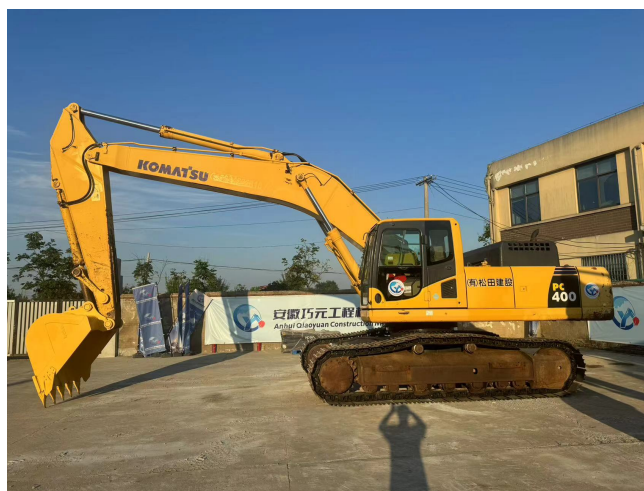




安徽巧元工程机械有限公司
Anhui Qiaoyuan Construction Machinery Co., LTD

INSPECTION REPORT

Responsible for every customer.



N o:

Inspection report of the hydraulic type excavator

Supervision and inspection report of hydraulic excavator

Testing company	Anhui Qiaoyuan Construction Machinery Co., Ltd		
Machinery brand	Komatsu	Mechanical model	PC400-8
Mechanical size	11940*3340*3660mm	Mechanical weight	40tons
Engine power	257kw	Dipper capacity	1.9 cubic meter
User Device Number	KMTPC192A02070381	Examination clerk	David

Inspection standard

1. General Safety Technical Requirements for Construction Machinery (JB6030-20XX);
2. Test Method for Hydraulic Excavator (GB / T7586-1996);
3. Technical Conditions of Hydraulic Excavator (GB/T9139.2-1996);
4. The Structure and Performance of Hydraulic Excavator (GB / T9140-1996);
5. Mining Force Test Method of Hydraulic Excavator (GB / T13332-1991);
6. Classification of Hydraulic Excavators (GB/T9139.1-1988);
7. Test Method for Structural Strength of Hydraulic Excavator (GB / T9141-1988);

N o:

Order number	Item class	Project number	Inspecting item	Result
1	1. Technology datum	1.1	Make relevant information	Qualified
2		1.2	Transformation (overhaul) related information	Qualified
3		1.3	Use relevant information	Qualified
4	2.	2.1	Inspection mark	Qualified
5		2.2	Logo of dangerous parts	Qualified
6	3. Metal construction	3.1	Metal mechanism condition	Qualified
7		3.2	Metal structure connection	Qualified
8		3.3.1	Hydraulic lifting arm	Qualified
9		3.3.2	Track connection	Qualified
10		3.3.3	Shovel bucket connection	Qualified
11		3.3.4	Move arm connection	Qualified
12		3.3.5	Doupole connection	Qualified
13	5. Main parts and mechanisms	5.1.1	Engine device	Qualified
14		5.1.2	Engine assembly to wear out	Qualified
15		5.2.1	In the cylinder condition	Qualified
16		5.2.2	Cubor crankshaft wear and lubrication	Qualified
17		5.2.3	Connecting rod wear and lubrication	Qualified
18		5.2.4	Offcentric shaft wear and lubrication	Qualified
19		5.2.5	Cylinder sleeve device	Qualified
20		5.2.6	Cylinder assembly	Qualified
21		5.3.1	Number of piston rings	Qualified
22		5.3.2	Oil pump worker unit	Qualified
23		5.3.3	Operating state of the radiator	Qualified
24		5.4.1	Hand oil pump supply system	Qualified
25		5.4.2	Oil outlet valve device	Qualified
26		5.4.3	Cylinder bed safety device	Qualified
27		5.4.4	Stank nozzle wear and tear	Qualified
28	5.5.1	A large ring of teeth	Qualified	
29	5.5.2	The plate bearing is worn	Qualified	
30	5.5.3	The screw is worn	Qualified	

N O:

Order number	Item class	Project number	Inspecting item	Result
31	6. Hydraulic pressure system	6.1	Pressure setting of the safety overflow valve of the hydraulic system	Qualified
32		6.2	Balancing valve and the hydraulic lock	Qualified
33		6.3	Hydraulic oil tank filter unit	Qualified
34		6.4	Oil leakage condition of hydraulic pipeline, joint and valve set	Qualified
35		6.5	hose connction	Qualified
36		6.6	Safety warning signs of the accumulator	Qualified
37		6.7	Hydraulic motor power	Qualified
38		6.8	Hydraulic cylinder connection path	Qualified
39	7. Safety devices and protective measures	7.1	Excavate the indicator	Qualified
40		7.2	gradienter	Qualified
41		7.3	Torque limiter	Qualified
42		7.4	height limitator	Qualified
43		7.5	safety guard	Qualified
44		7.6	Anti-recoil device	Qualified
45		7.7	speed indicator	Qualified
46		7.8	Excavator horn	Qualified
47		7.9	Operator room rotation indicator	Qualified
48		7.10	Rotate the operation pedal	Qualified
49	8. Operate system	8.1	Automatic reset function of the operating handle and pedal	Qualified
50		8.2	The sign of the operating handle and pedal	Qualified
51	9. Electricity gas	9.1	Excavator lighting	Qualified
52		9.2	Electric power drive protection requirements	Qualified
53		9.3	Power supply ground form	Qualified
54	10. Try examine	10.1	No-load test	Qualified
55		10.2	Load test	Qualified
56		10.3	Static test	Qualified
57		10.4	Dynamic test	Qualified
58		10.5	Sealing performance test	Qualified
59		10.6	Speed test	Qualified
60		10.7	With the load form test	Qualified
61		10.8	Turn table rotation test	Qualified
62		10.9	Moving arm landing test	Qualified



Result

Qualified

Check

The inspection results show that the excavator meets the relevant technical requirements and safety regulations in terms of appearance, size and weight performance indicators and safety. It is recommended that users strengthen the maintenance and care of the excavator during normal use to ensure its continued safe and efficient operation.

安徽巧元工程机械有限公司

Anhui Qiaoyuan Construction Machinery Co., LTD