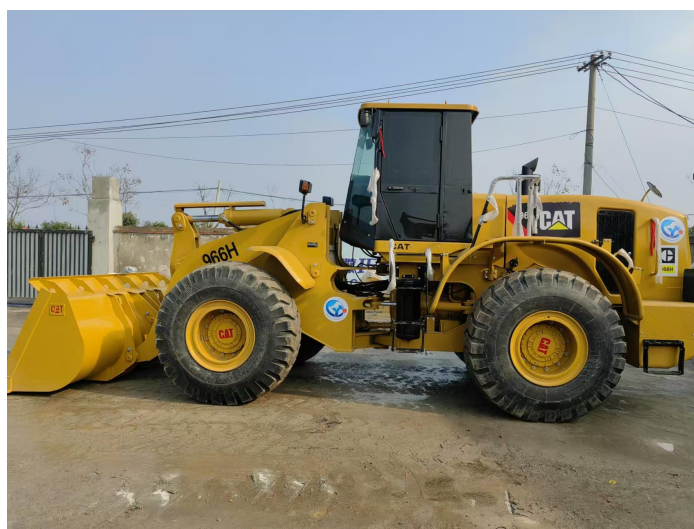




安徽巧元工程机械有限公司  
Anhui Qiaoyuan Construction Machinery Co., LTD

# INSPECTION REPORT

Responsible for every customer.



## Inspection report of the hydraulic type loader

### Supervision and inspection report of hydraulic loader

Testing company	Anhui Qiaoyuan Construction Machinery Co., Ltd		
Machinery brand	Caterpillar	Mechanical model	CAT966H
Mechanical size	7362*3600*3005mm	Mechanical weight	26tons
Engine power	213kw	Blade capacity	4.6cubic meter
User Device Number	*CATO966HHA6D01987*	Examination clerk	David



安徽巧元工程机械有限公司  
Anhui Qiaoyuan Machinery Co., LTD

Inspection item	Content and requirements	Result
1. Whole machine	1.1 Whether the main working performance meets the rated index. 1.2 The whole machine is complete and the working condition of each mechanism assembly is good. 1.3 Whether the parts are complete, whether the fasteners are firmly connected, and whether the instruments work normally. 1.4 Whether the whole machine is clean, no oil stains, no serious rust, no obvious leakage.	Qualified
2. Power device	2.1 Whether the starting and acceleration performance is good, the idle speed is stable; the output power is not less than 85% of the rated power. 2.2 Whether the operation is smooth and no abnormal noise, whether the oil pressure and water temperature are normal. 2.3 Whether all filters are complete and clean.	Qualified
3. Hydraulic and pneumatic systems	3.1 Whether the hydraulic components are in good condition, whether the operation is stable, whether the connection is reliable, and whether there is no leakage. 3.2 Whether the surface of the cylinder piston rod is smooth and free of marks. 3.3 Whether the hydraulic oil quality and oil quantity meet the regulations, whether the temperature rise during operation is normal. 3.4 Whether the pressure system works normally and whether the pressure meets the requirements.	Qualified
4. Electrical system	4.1 Whether the electrical pipeline is neat, whether it is damaged or aged, whether the connection is reliable, whether the electrical device is sensitive, and whether the insulation is good. 4.2 Whether the sound and light signals are clear and effective. 4.3 The battery is firmly fixed, and the specific gravity of the electrolyte and the height of the liquid surface meet the requirements.	Qualified

Inspection item	Content and requirements	Result
5. Working mechanism and chassis	5.1 The loading hopper is in good condition, and the frame and force-bearing parts are not cracked, deformed or obviously deformed. 5.2 Whether the transmission parts are running normally, no impact, vibration, no abnormal noise and overheating. 5.3 Whether the operation and steering device is flexible and reliable. 5.4 Whether the clutch is well combined and thoroughly separated. 5.5 Whether the gear of the transmission is correct and easy to shift. 5.6 Whether the braking device is complete, reliable and effective. 5.7 Whether the tire pressure is normal, whether it is severely worn and damaged.	Qualified
6. Lubrication	6.1 The lubrication device is complete and effective; the oil circuit is unobstructed. 6.2 Whether the lubrication of lubrication parts is good and whether the oil quality and oil quantity meet the requirements.	Qualified
<p>Result</p> <p style="text-align: center;"><b>Qualified</b></p>		
Check	<p>The inspection results show that the excavator meets the relevant technical requirements and safety regulations in terms of appearance, size and weight, performance indicators and safety. It is recommended that users strengthen the maintenance and care of the excavator during normal use to ensure its continued safe and efficient operation.</p>	